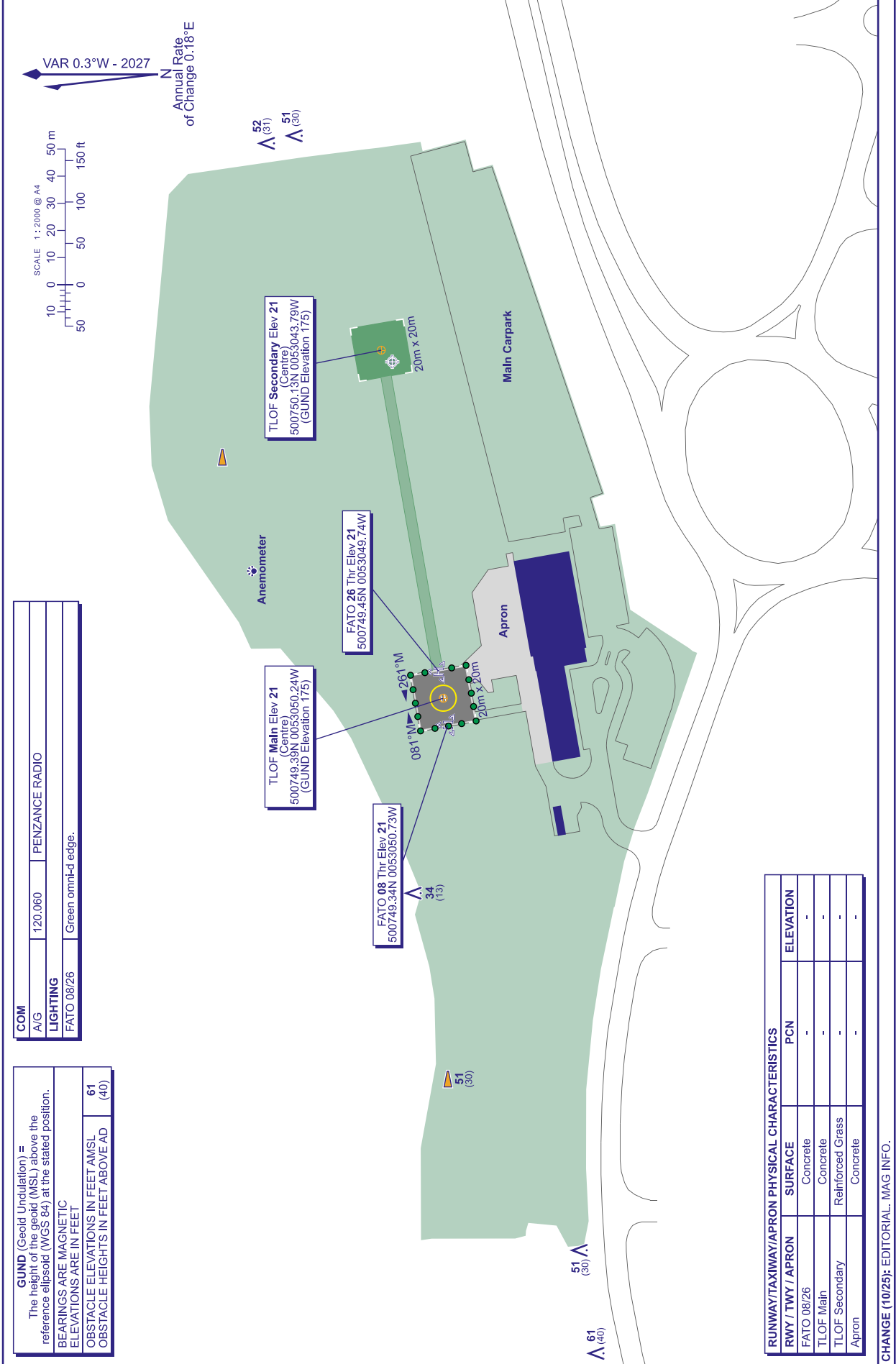


GUND (Geoid Undulation) = The height of the geoid (MSL) above the reference ellipsoid (WGS 84) at the stated position. BEARINGS ARE MAGNETIC ELEVATIONS ARE IN FEET	
OBSTACLE ELEVATIONS IN FEET AMSL	61 (40)
OBSTACLE HEIGHTS IN FEET ABOVE AD	61 (40)

COM	
A/G	120,060 PENZANCE RADIO
LIGHTING	
FATO 08/26	Green omni-d edge.



RUNWAY/TAXIWAY/APRON PHYSICAL CHARACTERISTICS			
RWY / TWY / APRON	SURFACE	PCN	ELEVATION
FATO 08/26	Concrete	-	-
TLOF Main	Concrete	-	-
TLOF Secondary	Reinforced Grass	-	-
Apron	Concrete	-	-